

*Ardmore Ceramic Art
takes pleasure in inviting you to an exhibition
at Grootte Schuur Estate in Cape Town to celebrate
"The Wonderful World of Ardmore"*

*Exhibition opening times:
Saturday 9th February 2008 from 10.00am until 7.00pm
Monday and Tuesday 11th and 12th February 2008
from 10.00am to 5.00pm*

*To facilitate your entry to the Grootte Schuur Estate,
and to comply with security regulations,
we would be grateful if you would return the attached card to us
by post or fax or send the information by email.*

(Note: only 200 people are allowed entry at a time.)

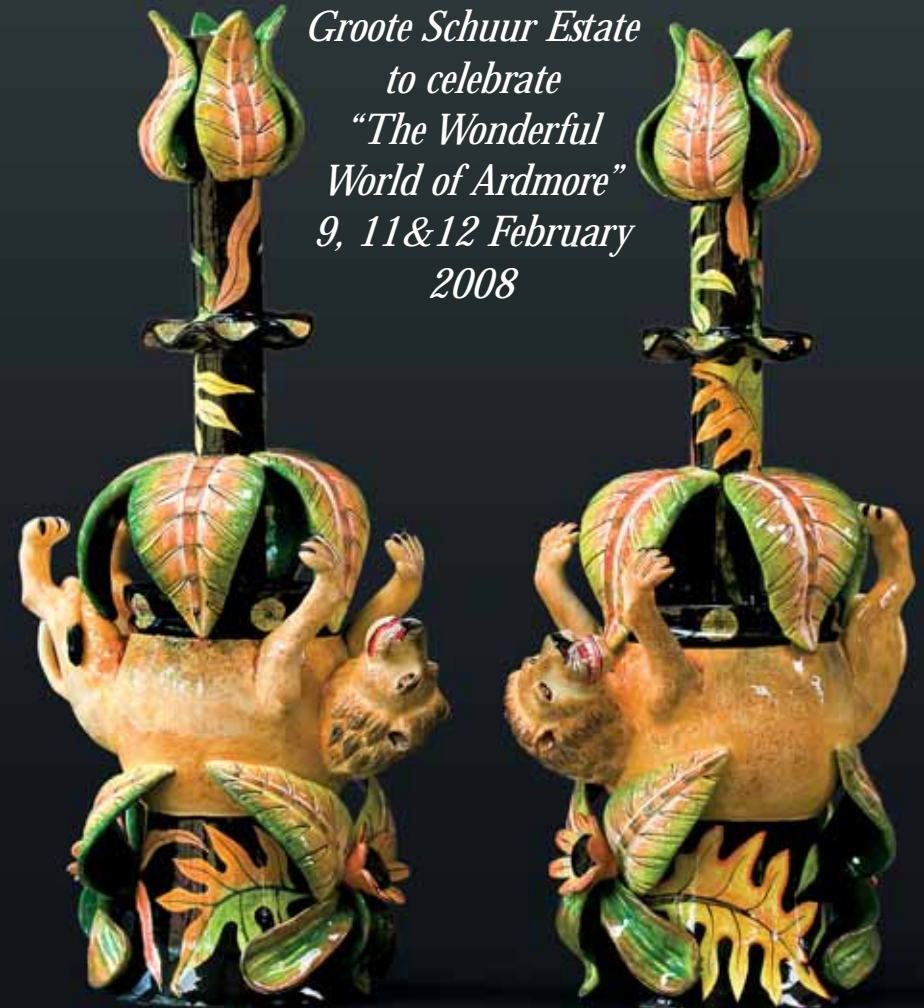
*For more information, please click on www.ardmoreceramics.co.za/brochure
or phone 033 234 4869 or Angela 079 825 0988*

a
Ardmore Ceramic Art

a

Ardmore Ceramic Art

*An invitation to
Grootte Schuur Estate
to celebrate
"The Wonderful
World of Ardmore"
9, 11&12 February
2008*





ARDMORE EXHIBITION AT GROOTE SCHUUR ESTATE

9, 11 & 12 FEBRUARY 2008

Directions to Groote Schuur Estate:

From Cape Town:

*Take the M3 south towards Muizenberg
Exit at Princess Anne Avenue
and keep left until you
reach the entrance to Groote Schuur.*

*You may also reach Groote Schuur via Main Road Rondebosch
Turn towards the mountain into Klipper Road.*

*At the gate you will be requested to show your
ID document or your passport
and your invitation to the Ardmore Exhibition.*

*Please call Angela on 079 825 0988
if you require any help.*



Ardmore Ceramic Art

Name

Address

.....

Email:

Telephone: ..(.....) Cell

Your ID or Passport Number

***NB: THIS INFORMATION WILL ALSO BE REQUIRED FOR
ANY PERSON ACCOMPANYING YOU.***

***BECAUSE ONLY 200 PEOPLE ARE ALLOWED INTO THE GROOTE
SCHUUR ESTATE AT ANY ONE TIME, FOR YOUR CONVENIENCE,
PLEASE ADVISE US WHEN YOU WOULD PREFER TO VISIT***

Saturday 9 February: 10.00am or 12.00 noon or 2.00pm, 3.30pm or 5.30pm

Monday 11 February: 10.00am or 12.00 noon or 2.00pm or 3.30pm.

Tuesday 12 February: 10.00am or 12.00 noon or 2.00pm or 3.30pm.

***Please post to: P.O. Box 273 Nottingham Road 3280 KwaZulu Natal
e-mail: angela@ardmoreceramics.co.za • Tel/Fax +27 33 234 4869
For more information: Website: www.ardmoreceramics.co.za/brochure***